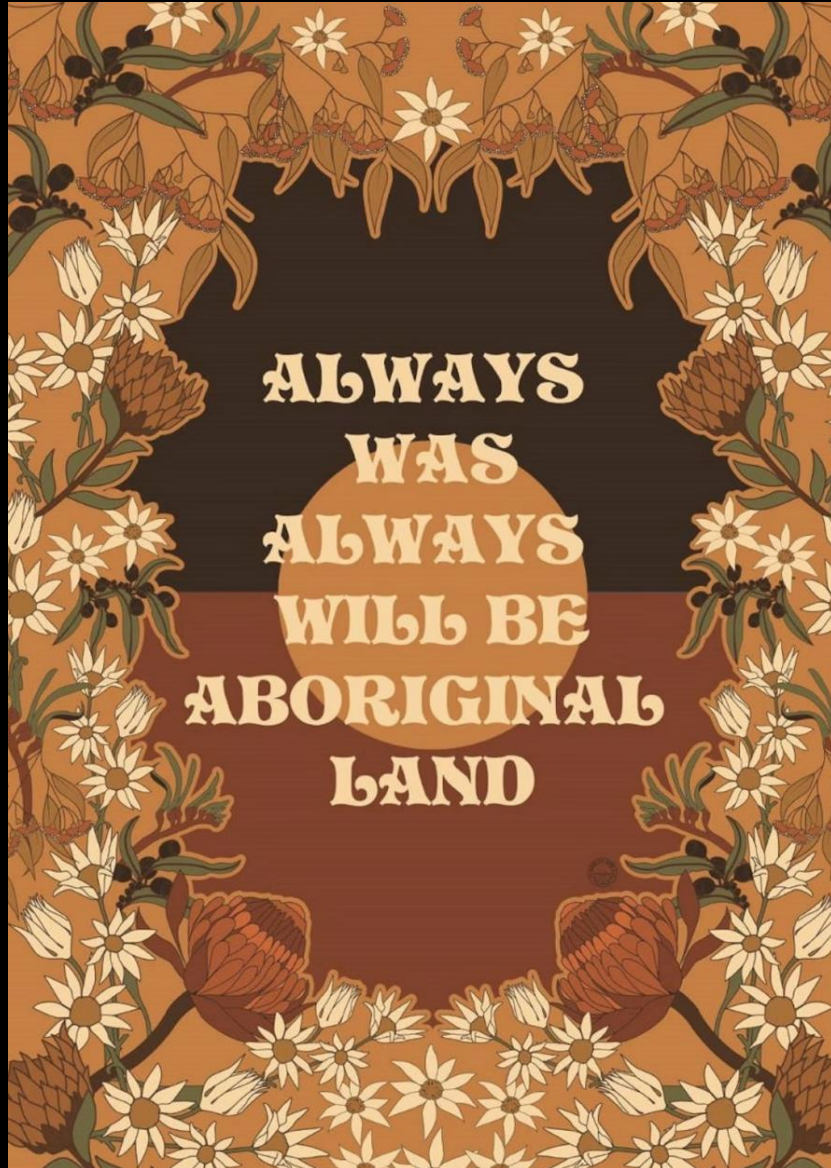


Hamilton Centre

The Victorian Statewide Centre for
Mental Health and Addiction

A/Prof Shalini Arunogiri
Clinical Director

Hamilton Centre team: *Jon Tyler, Lisa Jarvie, Vicky Phan
Annie Williams, Katrin Oliver, Guido Melo*



I am on the lands of the Wurundjeri people of the Kulin nation.

I wish to acknowledge them as the Traditional Owners, and to pay my respects to their Elders, past and present, and to extend that respect to Aboriginal and Torres Strait Islander peoples here today.

Open doors. Open minds.

For too long, people with co-occurring mental health and substance use conditions have fallen through the gaps in treatment services. The Hamilton Centre seeks to change that, working on solutions to deliver integrated care, through open minds and open doors.

Overview

- About us
- We'd love to hear from you



About the Hamilton Centre

The Hamilton Centre works to improve outcomes for people with co-occurring conditions by providing:

- A Helpline (1800 517 383) open Monday-Friday, 9am-5pm, for practitioners seeking:
 - Expert advice from experienced clinicians, for a secondary opinion regarding management of a client's substance use or addiction needs. This may also lead to referral services as outlined below.
 - service navigation assistance and guidance between mental health and AOD services (warm referrals).
- For clients with more complex needs, clinicians supporting clients of Area Mental Health and Wellbeing Services may seek a referral to the Hamilton Centre Clinical Network for:
 - longer term support (secondary consultation services) regarding the management of a client's substance use or addiction needs.
 - integrated addiction and mental health treatment, care and support (primary consultations) for people living with mental illness and substance use or addiction who have the most complex support needs.
- Workforce training and education targeting practitioners and clinicians across Victoria's mental health and AOD services to uplift their integrated treatment, care and support capability. Training opportunities will be available both online and face-to-face.
- Dedicated research into co-occurring mental illness and substance use or addiction, including research into optimal ways of delivering integrated care in Victoria, to improve outcomes for people with co-occurring conditions.
- The Hamilton Centre will also work to grow Victoria's addiction specialist workforce by creating dedicated training and development opportunities and will administer a scholarship program to encourage more new workers to specialise in the field of addiction.



Open minds. Open doors.

1800 517 383 | hamiltoncentre.org.au

Statewide Service Lead

As the Statewide Service lead, Turning Point will:

- **develop and deliver an education and training program that will increase workforce integrated care capability**
- **lead research into co-occurring mental illness and substance use or addiction**
- **provide brief centralised secondary consultation across both the mental health and wellbeing and AOD systems**
- **coordinate access to Addiction Services where further support is required for people with high-intensity AOD support needs.**



Who are we & what do we do?

Clinical Network

- Addiction psychiatry, addiction medicine, nurse practitioners, nurses
- Peer support workers (hiring soon)
- Trainees (medical for now, nursing soon)

Service profile

- Primary & secondary consultation (assessments & short term care); pharmacotherapy support

Who are we & what do we do?

Central team (Richmond/Turning Point)

- E-referral portal & coordination
- Service navigation & support line
- Education & training
- Research

When to refer...

- Consumers with co-occurring disorders (regardless of stage of action/motivation)
- Questions about assessment; management plan; evidence-based pharmacotherapy or psychosocial intervention advice; queries about service navigation (*which service is the best fit for my client right now?*)
- When in doubt – just ring us! 1800 517 383
- HC versus VDDI – it's not an either/or



Service offerings

- **Comprehensive addiction medicine/psychiatry biopsychosocial assessments to support care planning (e.g. like any specialist assessment)**
- **Advice re: addiction pharmacotherapies**
- **Shared care for opioid pharmacotherapy**
- **Harm reduction information**
- **In-service requests or team support**

Referral Portal & Service Navigation

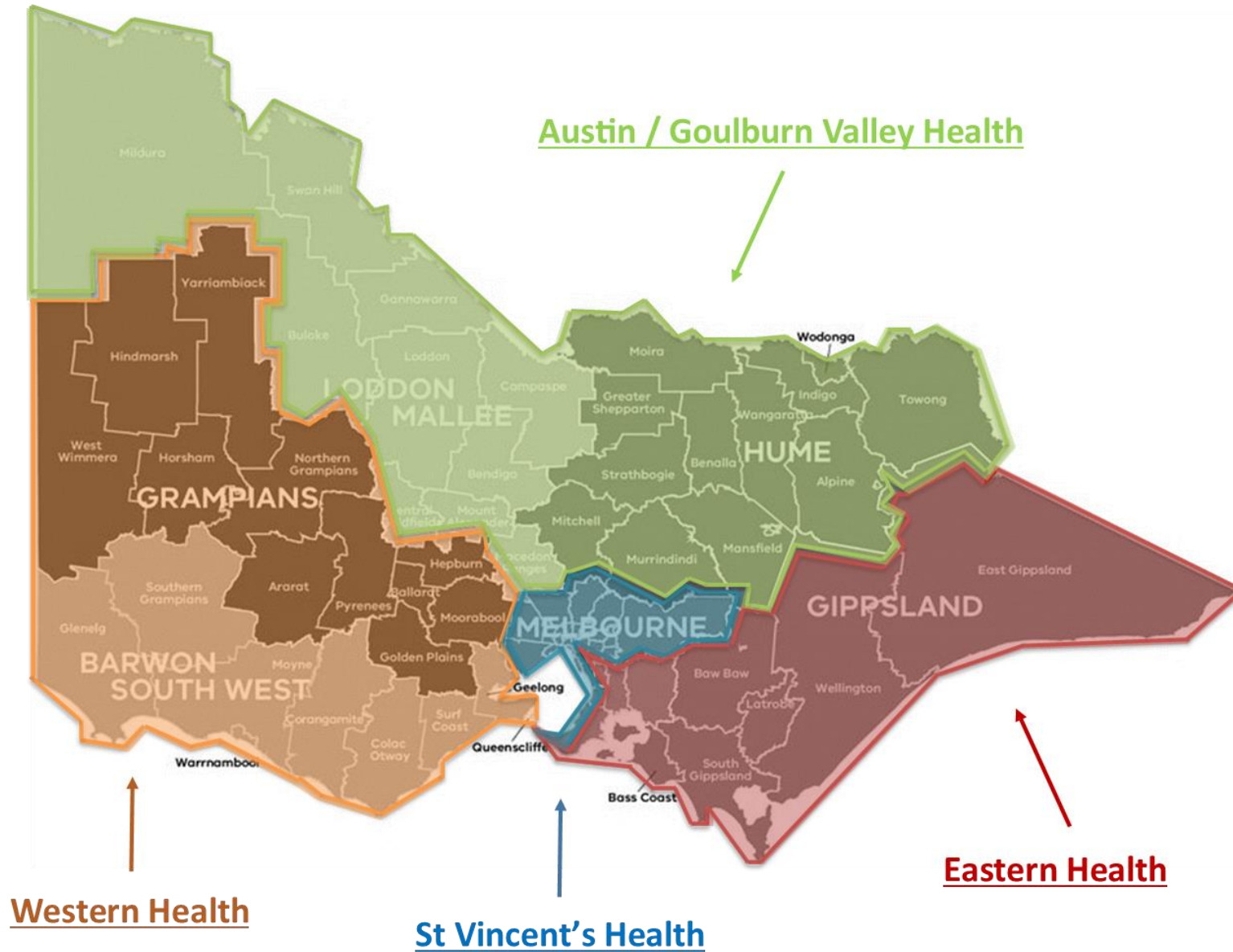
Lisa Jarvie

Clinical Network Providers

- St Vincent's Health
- Western Health
- Austin Health/Goulburn Valley Health
- Eastern Health
- Hamilton Centre Central – Turning Point

Network Providers

Network	Geographical area	Area Mental Health & Wellbeing Services
Austin/Goulburn Valley Health	Goulburn and Southern North East Hume North East Metro Loddon Campaspe/ Southern Mallee Northern Mallee	Goulburn Valley Health Albury Wodonga Health Austin Health Bendigo Health Mildura Base Hospital
Western Health	Grampians Barwon South West Metro Glenelg Mid West Metro North Western Metro	Ballarat Health Barwon Health Mercy Health South West Healthcare Western Health RCH inc ORYGEN
St Vincent's Health	Inner East Metro Inner West Metro Northern Metro Inner South East Metro Peninsula	St Vincent's Hospital Melbourne Health Northern Health Alfred Health Peninsula Health
Eastern Health	Gippsland Central East Metro Outer East Metro Middle South East Metro	Latrobe Regional Hospital Eastern Health Eastern Health Monash Health



Services Offered

PRIMARY CONSULTATIONS

- Direct assessment and treatment plan formation in conjunction with the mental health team.

SECONDARY CONSULTATIONS


- Clinician to clinician provision of advice and input into a shared plan of care.

GENERAL INFORMATION AND SERVICE NAVIGATION

- Service navigation support to mental health clinicians outside targeted services to increase capacity in managing addiction and accessing appropriate supports.

Referral Form

www.hamiltoncentre.org.au

 **Hamilton
Centre**

[Home](#) [Our Network](#) [About](#) [Contact](#)

[Referral Form](#) [Urgent Help](#)

Referral and Information Form

The Hamilton Centre provides linkages between Victorian mental health and addiction services to support collaborative and integrated care for people living with co-occurring addiction and mental health concerns.

Please note: this is not an emergency or crisis line service, referrals and information requests to the Hamilton Centre will receive a response within 3-8 business days. Please contact the Hamilton Centre telephone line if you are waiting on a response beyond this timeframe.

Your first name*

Your last name*

Hamilton Centre: 1800 517 383

Primary and Secondary Consultation

Area Mental Health and Wellbeing Services

- Including inpatient unit, community, CYMHS amongst others
- Ongoing care must be coordinated by AMHWBS

Future

- TBC, possibly Local Mental Health and Wellbeing Services
- Expansion of Clinical Network to engage additional Clinical Network Providers

General Information and Service Navigation

- Referrals accepted from any clinician/service
- Interdisciplinary team including peers in the future
- One-off or a series of guidance/mentoring interactions
- Provision of introductions and recommendations – warm referrals and service linkages
- Works closely with existing AOD Pathways to utilise current expertise in service navigation

Example of support

Dr Vicky Phan

Lead- Hamilton Centre Eastern team

Examples of support so far

- **Clinical network referral from a MH regional team**
 - **to support transfer from methadone to LAI-B in a client receiving case management from MH team**
 - **with the clinical network's support, the MH team was able to successfully support transfer to LAI-B and is now providing pharmacotherapy to the client**



Open minds. Open doors.

Find more information on:

- eReferral
- FAQ's
- Catchment Areas

Dual diagnosis capable workforce


Education, training, capacity building

- Shared language and definitions
- Training, professional development that meets individual and service needs
- Recognising transferable skills

<https://www.turningpoint.org.au/research/engage/Statewide-Service-for-Mental-Health-and-Addiction-Consultation>

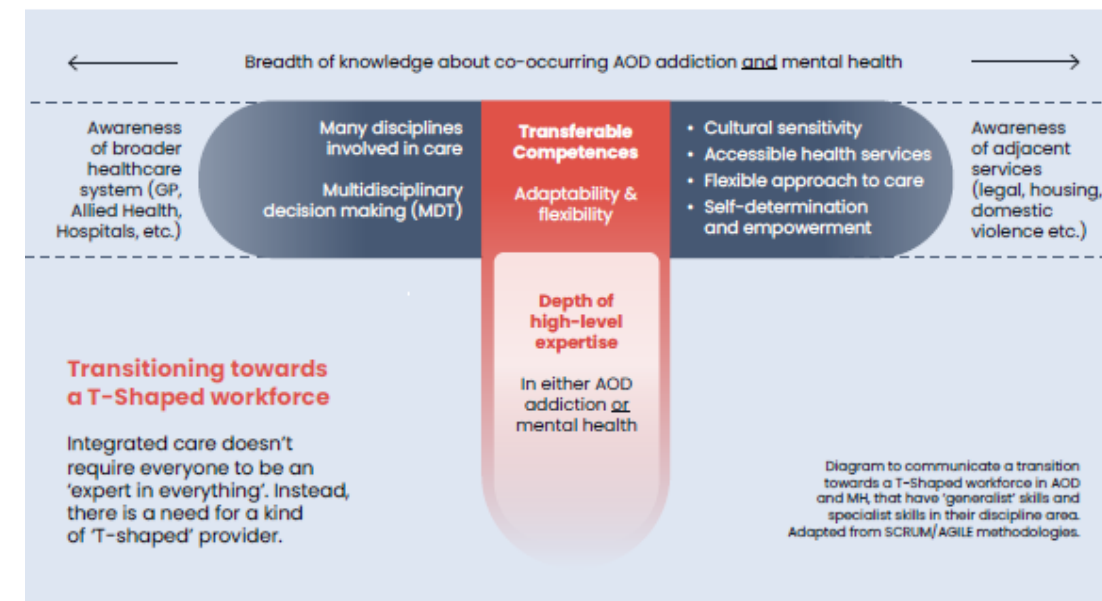
Dual- diagnosis workforce of the future

Training, education and learning are central to enabling integrated care and enshrining meaningful change well into the future.

 "Try to get your system leaders, your management and your clinical leaders on board with it and develop their unified vision around integrated care."
— Dual Diagnosis Clinician, Workshop 2

Actionable insights

- AOD workforce need basic mental health training, including training around the Mental Health act.
- MH workforce need basic AOD care training, including key concepts like harm reduction, withdrawal and detox.
- Training is required to challenge stigma and support ongoing culture change.
- Beyond frontline service providers, senior managers, CEO's and executives also need learning and development. This could be in the format of 'reflective practice' groups or workshops.



Next steps

- Continuing to build relationships & networks with MHWB clinical teams across the state
- Looking forward to scaling up clinical service provision (*AOD, Primary Care, Local MHWB teams*)
- Scholarship program for Graduate Certificate in Addictive Behaviours (launches this week)
- Education & training, capacity building and research programs in development
 - focus includes work with MHWB team managers and leaders; AOD-related stigma in MH settings; community of practice

**thank you from the
Hamilton Centre team**

shalini.arunogiri@monash.edu

info@hamiltoncentre.org.au